



Saltmine Theatre Company

Secondary Education Brochure

2024/25

saltminetrust.org.uk/theatreineducation

creative@saltmine.org

[@saltminetrust](https://www.instagram.com/saltminetrust)

Contents

- 3 Who Are We?
- 4 Empathy, Compassion, Understanding
- 5 Delivering Preventative Education
- 6 Overview of Current Productions
- 7 Preventative Education KS3 & KS4
- 12 What are Educators and Students saying?
- 13 Acting & Schools Team
- 15 Office Team
- 16 Pricing/Contact page

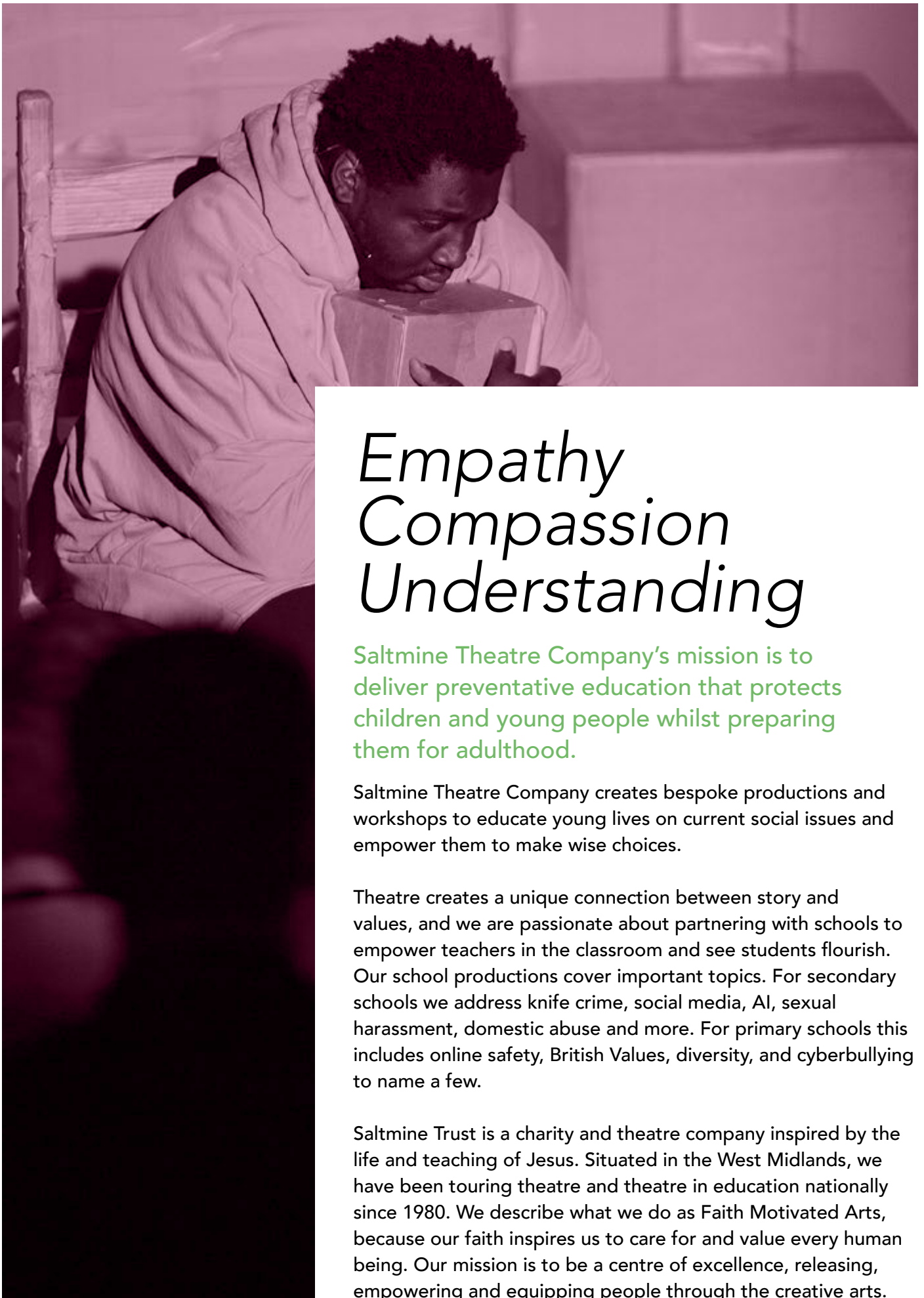


SALTMINE



Who Are We?





Empathy Compassion Understanding

Saltmine Theatre Company's mission is to deliver preventative education that protects children and young people whilst preparing them for adulthood.

Saltmine Theatre Company creates bespoke productions and workshops to educate young lives on current social issues and empower them to make wise choices.

Theatre creates a unique connection between story and values, and we are passionate about partnering with schools to empower teachers in the classroom and see students flourish. Our school productions cover important topics. For secondary schools we address knife crime, social media, AI, sexual harassment, domestic abuse and more. For primary schools this includes online safety, British Values, diversity, and cyberbullying to name a few.

Saltmine Trust is a charity and theatre company inspired by the life and teaching of Jesus. Situated in the West Midlands, we have been touring theatre and theatre in education nationally since 1980. We describe what we do as Faith Motivated Arts, because our faith inspires us to care for and value every human being. Our mission is to be a centre of excellence, releasing, empowering and equipping people through the creative arts.



Delivering Preventative Education

We use theatre to educate because when you witness a story with characters you can relate to, you engage at a profound level. We end with a workshop to unpack the issues addressed.

With an engaging team of relatable young people we facilitate discussion and provoke critical thinking, enabling young lives to make positive life choices.

Our aim is to always be transformational, inclusive, servant-hearted, distinctive and innovative.

Overview of Current Productions



FILTERS

- social media use
- artificial intelligence
- cyberbullying
- pornography
- sexual harassment

Summer Tour 2024

3rd – 16th July

Spring Tour 2025

27th Jan – 14th Feb



SWITCH UP

- knife crime
- gang culture and violence
- county lines
- joint enterprise
- self-identity

Autumn Tour 2024

7th – 25th October



NEW SHOW

- mental wellbeing
- resilience
- social media
- self esteem

Spring Tour 2025

10th March – 9th April



FAULTLINES

- domestic abuse
- relationships
- gaslighting
- control

Please enquire for future dates.





Preventative Education KS3 & KS4

We tackle some of the most prevalent issues facing young people today.

These productions last approximately 50 minutes, with accompanying 50-minute workshops. Timetable and venue access permitting, they can be delivered to one or two year groups in a day.



Saltmine Theatre Company presents

filters

KEYSTAGE 3 & 4

Samantha is your typical "IT girl". Her world revolves around TikTok dances, selfies and the latest trends. She's got a big online following and even bigger dreams.

But riding high on 'likes' cannot last forever and cracks start to form in her once unbreakable friendship group. Truths get digitally twisted and an explicit image of Samantha gets exposed online in a way she cannot control. Will Samantha attempt to repair the damage to her online persona, or will she sit back helplessly and watch everything around her unravel? When filters can no longer mask the mess, Samantha and her friends are forced to face the issues in their own lives and deal with the consequences.

SUBJECT

**Social Media,
Sexual Harassment/Consent,
Cyberbullying, AI, Pornography**

Summer Tour 2024

3rd – 16th July

Spring Tour 2025

27th January – 14th February

Saltmine Theatre Company presents

SWITCHUP

KEYSTAGE 3 & 4

Meet best mates Dan and Jay, about to finish school and considering their career options. Dan is a rapper starting to gain exposure; Jay is an aspiring footballer with forthcoming trials for professional clubs. Both are desperate to leave 'The Wood', the estate where they live where gangs, crime and violence are the norm.

But everything changes when Dan is robbed by a gang and seeks revenge by joining a rival gang – and Jay reluctantly tags along. Suddenly they can earn respect and money, and 'The Wood' is transformed into their 'red carpet'. The pressure is on though – rival gangs start to threaten, tensions rise and the boys must decide whether or not to carry a knife.

SUBJECT

**Knife Crime, Gang Culture,
County Lines, Joint Enterprise**

Autumn Tour 2024

7th Oct – 25th October

NEW **Mental Wellbeing show** **coming 2025**

KEYSTAGE 3 & 4

According to mental health charity Mind, issues surrounding mental health are on the rise in young people, and school or college is where they would like to go for help first. Saltmine's new mental health show will equip schools to identify and connect with young people at risk whilst providing an opportunity to begin conversations which could be life-changing.

Using the words of real teenagers combined with physical and visual storytelling and elements of mixed media and music, our new piece of theatre will unpack true stories of challenges young people face and how they can overcome them. Focusing on building self-esteem, resilience and healthy relationships, our show and accompanying workshop will be an invaluable toolkit to help maintain positive mental fitness for the future.

SUBJECT

**Mental Wellbeing, Resilience,
Social Media, Self Esteem**

Spring Tour 2025

10th March – 9th April

SALTMINE THEATRE COMPANY PRESENTS

FAULTLINES

REAL STORIES OF DOMESTIC ABUSE

KEYSTAGE 3 & 4

Using personal stories and first-hand accounts, Faultlines is a play built on truth. Saltmine Theatre Company investigates the very first tremors of toxicity – control, gaslighting and love bombing - which often lead to physical violence and emotional abuse.

Weaving together the stories of people who have experienced domestic abuse, we reclaim their narratives - empowering audiences to notice these signs personally and in others.

Faultlines has been forged together with real life stories gifted with the purpose to educate, challenge and change lives. Through a performance and interactive workshop we explore what healthy relationships look like, celebrate the bravery of sharing stories and equip young people for escape and action.

This is about freedom.

SUBJECT

**Domestic abuse, Relationships,
Gaslighting, Control**

Please enquire for future dates.

What are Educators and Students saying?



"Saltmine were excellent, very friendly, polite and professional. The students gave so many positive comments. It was a really inspiring day and I don't think you can ever truly measure the impact of days like this, as these messages will stay with these students for a long time."

"Students feedback was excellent, they recommended we have them back in to show other year groups as they felt the message was clear and important in today's society."

"You lot are amazing. Keep up the good work and keep changing peoples lives."

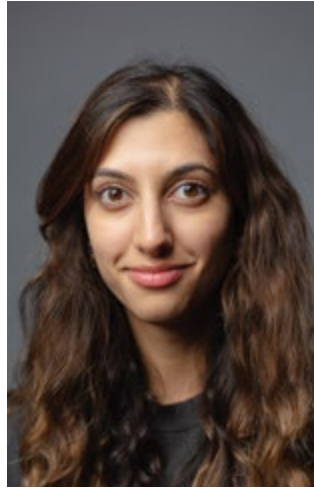
"Thanks for coming to my school today and the Switch Up play was amazing"

"Your performance was so outstanding you guys deserve an Oscar."

Acting/Schools Team



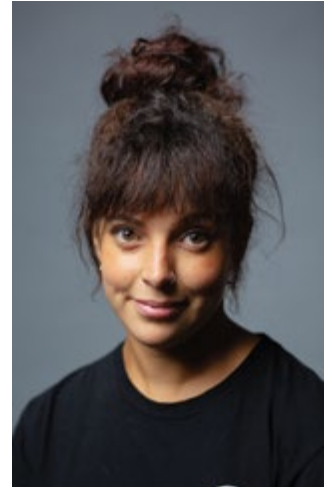
Ben



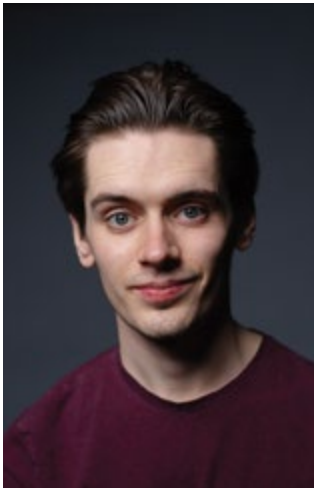
Anisha



Rowmell



Emily



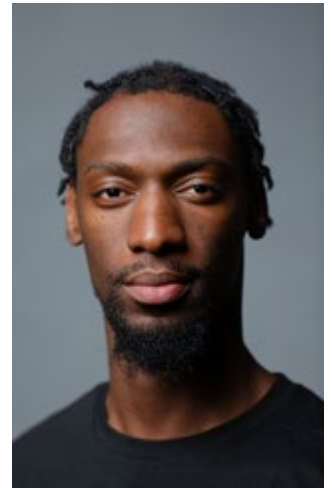
Daniel



Hannah



Pheobe



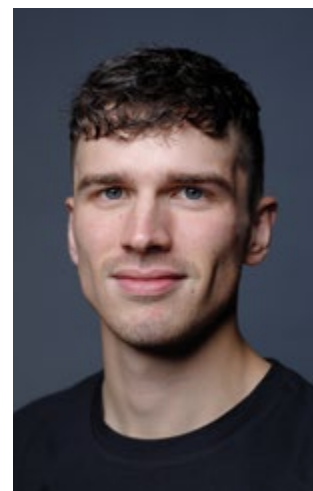
Theo



Suzi



Simon



Henry

All actors have Enhanced DBS Clearance

Mental Health First Aiders:

Ben, Anisha, Rowmell, Emily, Dan, Simon, Henry

Office Team



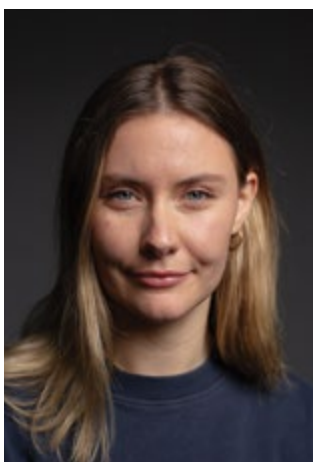
Rachael
CEO



Joanna
Tour Co-ordinator



Jonathan
Photographer



Lydia
Marketing Co-ordinator



Diane
Finance Administrator



Sara
Operations Manager

All staff have a DBS certificate

Mental Health First Aiders: Rachael and Lydia

How We Work

- 1 An enquiry through phone, email or Saltmines online form is received.
- 2 We contact the school with more information and agree on a provisional date for the booking.
- 3 Our Tour Coordinator will send a booking form to complete, with an accompanying email which gives details of length of performance and workshop and length of set up time and pack down time needed.
- 4 On receipt of the completed booking form and for secondary schools, as and when any queries about the space have been resolved the booking is confirmed.
- 5 Our Tour Coordinator will be in contact with the school near to the time of the visit to plan a schedule which fits into your school's timetable.
- 6 After the visit, we invoice the school for the total cost.
- 7 Finally, we send through our online evaluation form: please do take a moment to complete this as we always want to develop and improve our service to schools.

For some productions there are additional resources available, for example a letter to parents or a an Education Pack. We will liaise with each school regarding when it would be appropriate to send these through and if a cost is involved.

Saltmine Trust promotes the productions and workshops we will be touring within a financial year via this Education Pack, our website and social media platforms, and by promotional emails.

**Please note that if your school would like to receive information via email, please call 01384 454800 or email creative@saltmine.org with your details.*



Pricing

KS3 & KS4 productions and workshop

£950 + travel + VAT per day



Contact Us

Online Booking Enquiries:

saltminetrust.org.uk

Booking Enquiries:

creative@saltmine.org

Telephone Enquiries:

01384 454 800

We look forward to working with you

Saltmine Trust, 61 The Broadway, Dudley, West Midlands, DY1 3EB



All rights reserved Saltmine Trust © 2024 Saltmine Trust is a registered charity: No 1038007, and a limited company registered in England and Wales: No 2930528