



SALTMINE

Saltmine Theatre Company

PRIMARY EDUCATION PROGRAMME

2025/26

Contents

- 4 About Us
- 5 Delivering Theatre in Education
- 6 Current Productions & Accompanying Workshops
- 7 Programme
- 13 Testimonials
- 14 Schools Team
- 15 Office Team
- 16 How We Work
- 17 Pricing and Contact Info



Innovation Inclusivity Impact

Saltmine Theatre Company's mission is to deliver preventative education that protects children and young people whilst preparing them for adulthood.

Saltmine Theatre Company creates bespoke productions and workshops to educate young lives on current social issues and empower them to make wise choices.

Theatre creates a unique connection between story and values and we are passionate about partnering with schools to support teachers and see students flourish. Our school productions cover important topics. For primary schools this includes **online safety**, **British Values**, **mental wellbeing**, **positive relationships** and **cyberbullying** to name a few. For secondary schools we address knife crime, mental wellbeing, social media safety, healthy relationships and consent.

Saltmine Trust is a charity and theatre company inspired by the life and teaching of Jesus. Situated in the West Midlands, we have been touring theatre and theatre in education nationally since 1980. We describe what we do as Faith Motivated Arts, because our faith inspires us to care for and value every human being. Our mission is to be a centre of excellence, releasing, empowering and equipping people through the creative arts.

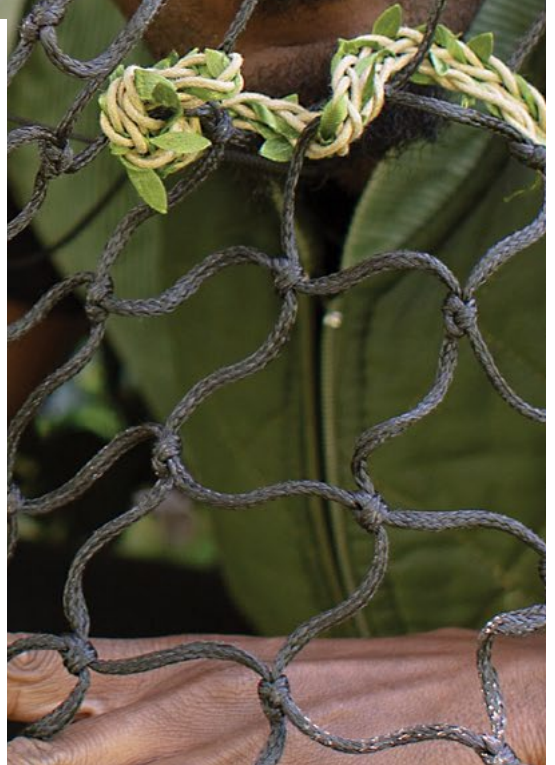




Delivering Theatre in Education

We facilitate discussion and provoke critical thinking, enabling children to make positive choices.

Our aim is to always be transformational, inclusive, servant-hearted, distinctive and innovative.



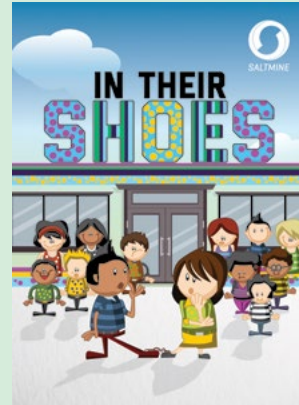
Current Productions & Accompanying Workshops



Mental Wellbeing



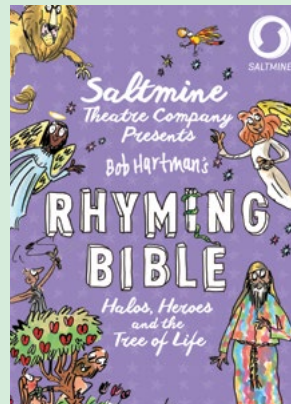
Online Safety



British Values



Inclusion



Religious Studies

All productions and workshops have received high acclaim from educators who have frequently given them five-star reviews.

Preventative Education KS1 & KS2

We tackle some of the most prevalent issues facing children today through our productions and workshops.

These productions last approximately 45 minutes – 1 hour, with accompanying 45-minute workshops. Within a tour day, productions can be delivered twice in one school or once in two neighbouring schools within five miles (who then share the cost of booking the day).





Dreams are for life - not just for bedtime. They build our personalities and shape our futures. When dreams die the effects can touch hundreds of lives. Professor Harofligab and young apprentice Tiffle are *Dreamkeepers* who collect and protect people's dreams, securing them in their Dream Vault and releasing them when the time is right. On this particular day they notice that the dreams have started to fade...but what is the cause, and how can it be fixed?

Using puppetry, masks and music and accompanied by a dream-empowering workshop, this performance explores the effects and consequences of bullying, how to promote positive relationships and how to empower positive mental wellbeing.

SUBJECT

**Anti-Bullying,
Positive Relationships,
Mental Wellbeing**

Spring Tour 2026

29th April – 12th June



Welcome to 'Deep Space'! Each day, hundreds of thousands of space shuttles launch to explore the furthest reaches of this extraordinary galaxy. New recruit 12-year-old Imogen, accompanied by her helpful robot assistant D44, is setting off on her first space mission: to deliver urgent medical cargo. On route she encounters meteor showers, distress signals and shapeshifting aliens. Will she get dragged off course into the dangers of uncharted space? Or can she remember the 'Space Code' to pilot herself back to the Safe Zone?

Blast Off with Saltmine Theatre Company to learn how we can safely navigate and enjoy the Internet.

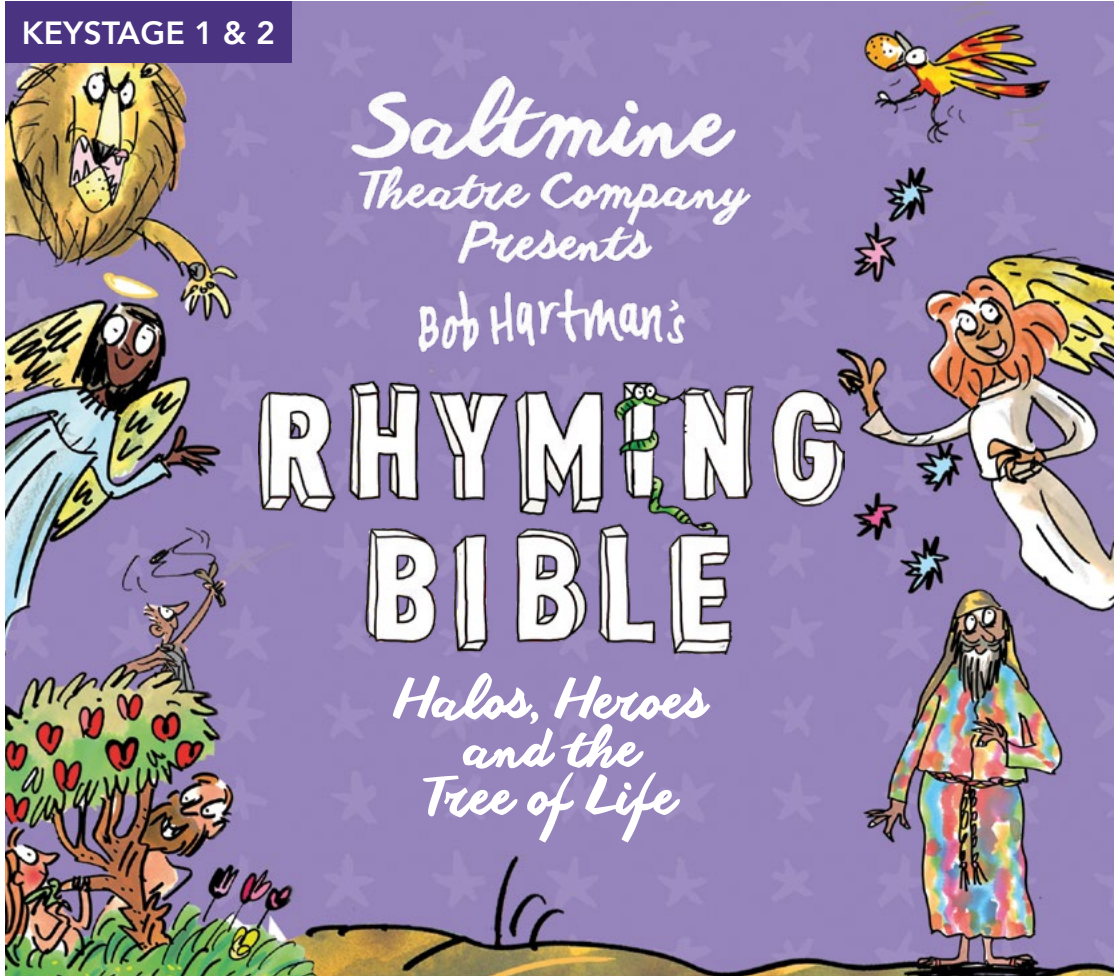
SUBJECT

**Online Safety, Cyberbullying,
Grooming, Inappropriate Content**

Spring Tour 2026

22nd Jan – 13th Feb

KEYSTAGE 1 & 2



*Like all angels before you will learn of the story,
The best story of all filled with wonder and glory...*

SUBJECT

Religious Studies

Full of music, hilarity and enchantment, the Angels are here with another heavenly year at Angelus High. Studies include flying, singing and most excitingly, THE STORY! But where is the story leading? Who are the real Heroes? What on earth has happened to the Tree of Life?

Spring Tour 2026

4th – 20th March

These questions (and more) will be answered in the halo-shining, beast-taming, tree-finding frolic that is the *Rhyming Bible: Halos, Heroes and the Tree of Life!*

IN THEIR SHOES



In Their Shoes is a unique production and workshop that celebrates unity in diversity and sensitively explores issues around extremism. This is a play written and produced with multi-faith partners which features a diverse cast. It is an example of what can be achieved when different people work together, using their abilities to meet the same goal.

The Spots and the Stripes have always hated one another for no real reason other than that they are different. After a particularly heated argument with a Spot, one Stripe is convinced that she must find people who can help her stand up to the Spot. However, as she searches she meets characters who tell her stories about how it is possible to get along, despite being different. As she listens, the Stripe is challenged to spend time in her neighbour's shoes and see a potential friend, instead of an enemy.

SUBJECT

**British Values,
Unity in Diversity,
Respect, Collaboration**

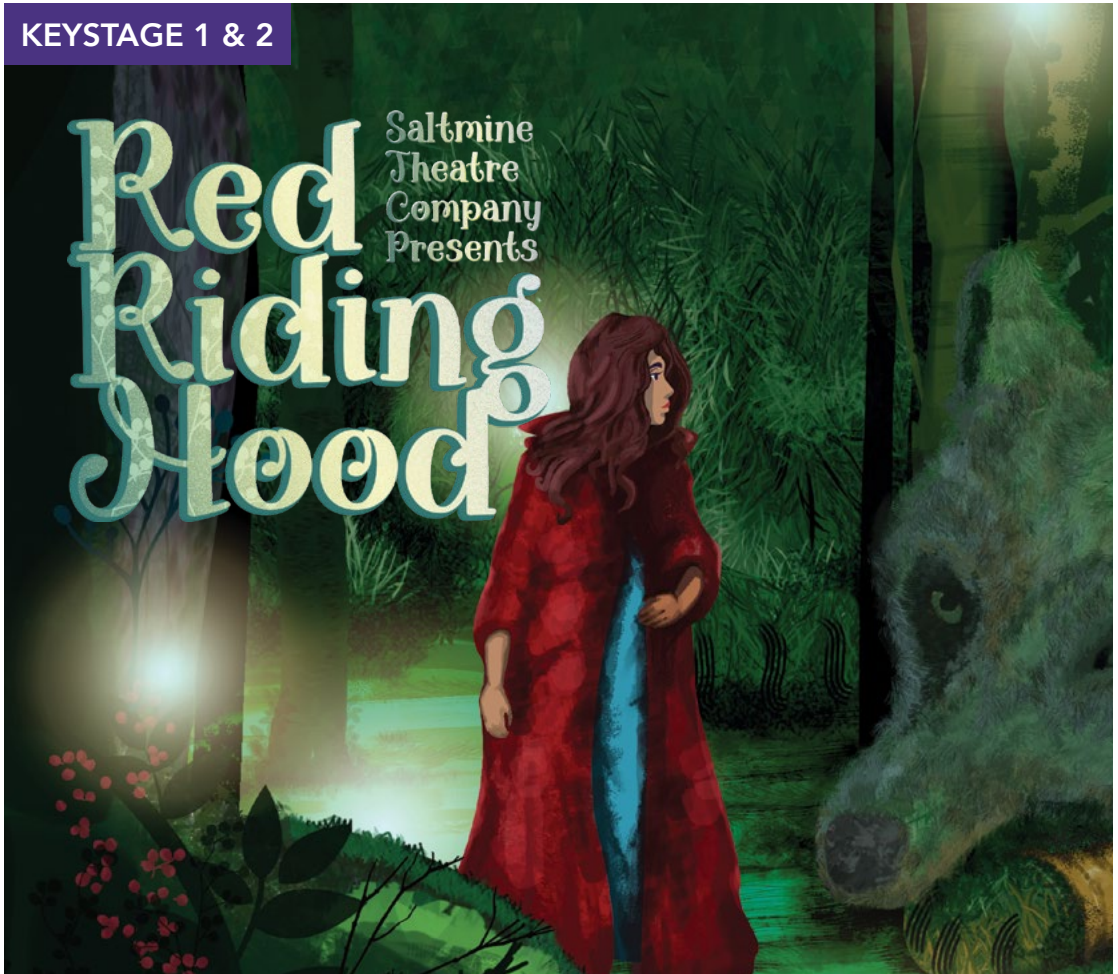
Summer Tour 2025

19th – 23rd May,
2nd – 11th June

Summer Tour 2026

Enquire for dates

KEYSTAGE 1 & 2



On the longest night of the year, Ruby's village is preparing for winter's most extravagant event – welcoming the 'Light' at the Christmas Party. However when local hero Austin crashes in to report a dangerous wolf on the loose, the celebration is thrown into jeopardy. Feared to be set on ruining festivities, the wolf is rumoured to threaten the very future of the town.

Guided by her sense of adventure – and a mysterious summons – it is down to Ruby to journey into the heart of the forest and discover the truth behind the stories. Who can she trust in this deep, dark wood?

Join us off the beaten track for a modern-day twist on this classic tale, as we come face to face with the big bad wolf and find out what it really means to belong.

SUBJECT

**Equality, Inclusion,
Discrimination**

Christmas Tour 2025
29th Nov – 22nd Dec

Testimonials

100%

of educators were satisfied with the quality of the productions and workshops

98%

of educators would recommend us to a colleague or another school

"All schools if they have the opportunity should get Saltmine in to perform In Their Shoes."

–Teacher

"Our pupils are still referring to Blast Off's online safety Space Code!"

– Crowhurst CE Primary, Headteacher

"In Their Shoes got the British Values and Healthy Relationships across very clearly. The children could talk about the show and its message afterwards."

– Quarry Bank Primary, Deputy Head

"Blast Off teaches us that we can have fun online but also to be aware that people may not be who they say they are."

– Pupil

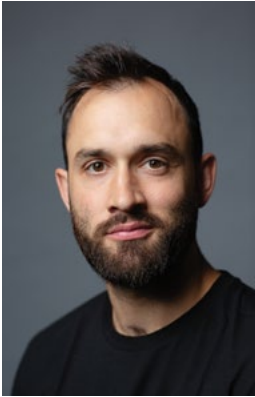
"Rhyming Bible was funny, faced-paced - and just incredible to be honest."

– Pupil

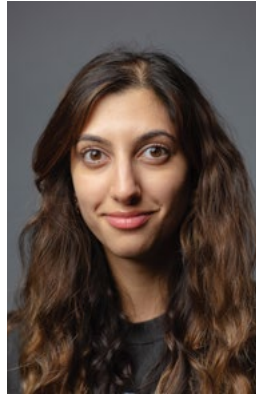
"Rhyming Bible retold God's big story in one session from Genesis through to the Gospels. It was really engaging and held the children's attention throughout."

– Bollington St John's CofE Primary, Teacher and SENCO

Acting/Schools Team



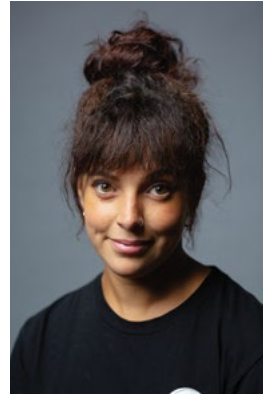
Ben



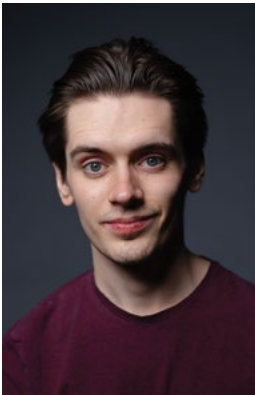
Anisha



Rowmell



Emily



Daniel



Esther



Yasmin



Theo



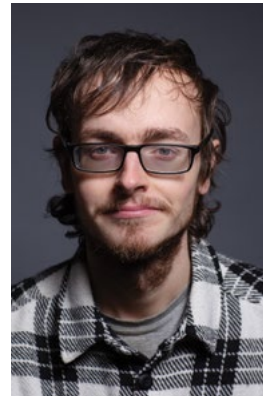
Katie



Simon



Jacob



Josh

All actors have Enhanced DBS Clearance

Mental Health First Aiders:
Ben, Anisha, Rowmell, Emily, Daniel, Simon, Jacob

Office Team



Rachael
CEO



Joanna
Creative Arts
Co-ordinator



Jonathan
Photographer



Byron
Social Media &
Content Creator



Lydia
Marketing &
Brand Manager



Diane
Finance Administrator



Sara
Operations Manager



Francesca
Fundraising &
Bid Officer

All staff have DBS Clearance

Mental Health First Aiders: Rachael and Lydia

How We Work

- 1 An enquiry through phone, email or Saltmine's online form is received.
- 2 We contact the school with more information and agree on a provisional date for the booking.
- 3 Our Creative Arts Co-ordinator will send a booking form to complete with an accompanying email detailing the length of performance, workshop, set up time and pack down time needed.
- 4 On receipt of the completed booking form (and for secondary schools, as and when any queries about the space have been resolved) the booking is confirmed.
- 5 Our Creative Arts Co-ordinator will be in contact with the school near to the time of the visit to plan a schedule which fits into your school's timetable.
- 6 After the visit, we invoice the school for the total cost.
- 7 Finally, we send through our online evaluation form: please do take a moment to complete this as we always want to develop and improve our service to schools.

For some productions there are additional resources available, for example a letter to parents or a Teacher's Pack. We will liaise with each school regarding when it would be appropriate to send these through and if a cost is involved.

Saltmine Trust promotes the productions and workshops we will be touring within a financial year via this education programme, our website, social media platforms and through promotional emails.

**If your school would like to receive information via email, please call 01384 454800 or email creative@saltmine.org with your details.*



PRICING

Production and accompanying workshop
£750 + travel + VAT per day

FUNDING

There may be funding opportunities.

Funding enquiries:
fundraiser@saltmine.org

CONTACT US

Online booking enquiries:
saltminetrust.org.uk

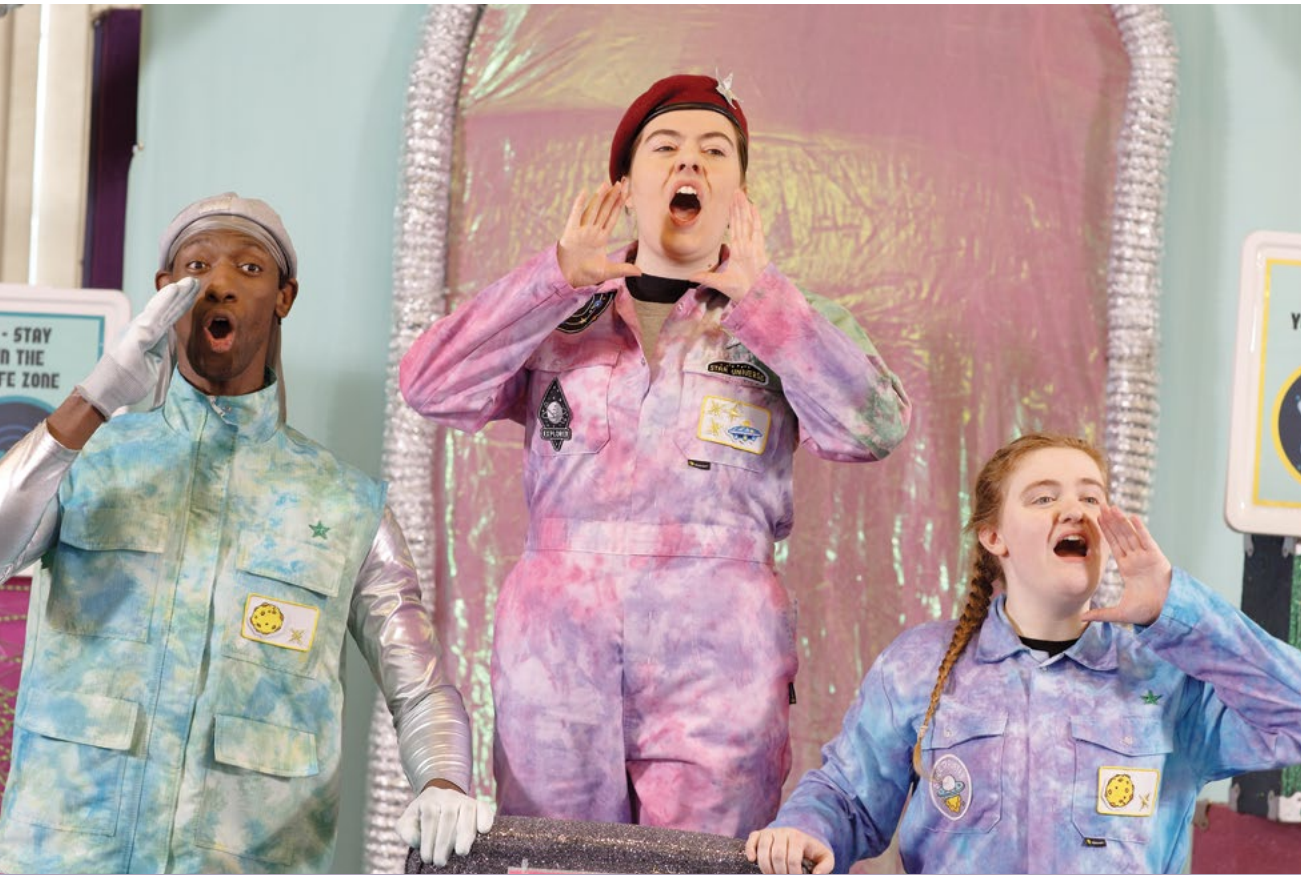
Booking enquiries:
creative@saltmine.org

Telephone enquiries:
01384 454 800



**We look forward to
working with you**





Follow us @saltminetrust



01384 454 800
creative@saltmine.org
saltminetrust.org.uk

61 The Broadway, Dudley, DY1 3EB. All rights reserved Saltmine Trust © 2025
Saltmine Trust is a registered charity: No 1038007, and a limited company
registered in England and Wales: No 2930528

