



SALTMINE



Saltmine Theatre Company

SECONDARY EDUCATION PROGRAMME

2025/26

Contents

- 4 About Us
- 5 Delivering Theatre in Education
- 6 Current Productions & Accompanying Workshops
- 7 Programme
- 12 Additional Classroom Resources
- 13 Testimonials
- 14 Schools Team
- 15 Office Team
- 16 How We Work
- 17 Pricing and Contact Info



Innovation Inclusivity Impact

Saltmine Theatre Company's mission is to deliver preventative education that protects children and young people whilst preparing them for adulthood.



Saltmine Theatre Company creates bespoke productions and workshops to educate young lives on current social issues and empower them to make wise choices. We are passionate about partnering with schools to support the teaching of the PSHE curriculum and see students flourish.

Our school productions address important topics. For primary schools this includes online safety, positive relationships and respect & diversity. For secondary schools these include **knife crime, mental wellbeing, social media safety, healthy relationships and consent.**

Saltmine Trust is a charity and theatre company inspired by the life and teaching of Jesus. Situated in the West Midlands, we have been touring theatre and theatre in education nationally since 1980. We describe what we do as Faith Motivated Arts because our faith inspires us to care for and value every human being. Our mission is to be a centre of excellence, releasing, empowering and equipping people through the creative arts.



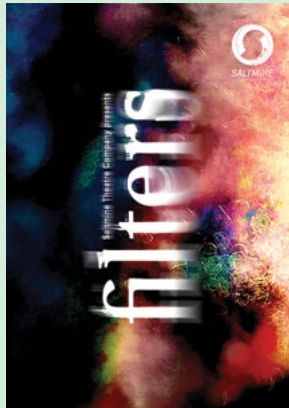
Delivering Theatre in Education

With an engaging team of relatable young people we facilitate discussion and provoke critical thinking, enabling young lives to make positive life choices.

Our aim is always to be transformational, inclusive, servant-hearted, distinctive and innovative.



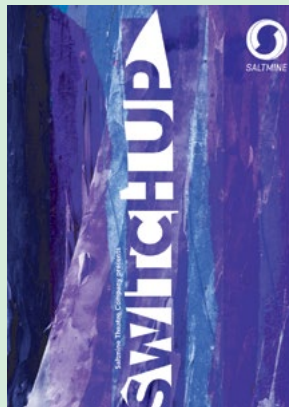
Current Productions & Accompanying Workshops



Social Media Safety



Mental Wellbeing



Knife Crime



Healthy Relationships

All productions and workshops have received high acclaim from educators who have frequently given them five-star reviews.



PSHE Education KS3 & KS4

We tackle some of the most prevalent issues facing young people today.

These productions last **approximately 50 minutes** with accompanying **50-minute workshops**. Timetable and venue access permitting, they can be delivered twice a day (no maximum audience numbers).



Samantha is your typical “IT girl”. Her world revolves around TikTok dances, selfies and the latest trends. She’s got a big online following and even bigger dreams.

But riding high on ‘likes’ cannot last forever and cracks start to form in her once unbreakable friendship group. Truths get digitally twisted and an explicit image of Samantha gets exposed online in a way she cannot control. Will Samantha attempt to repair the damage to her online persona, or will she sit back helplessly and watch everything around her unravel? When filters can no longer mask the mess, Samantha and her friends are forced to face the issues in their own lives and deal with the consequences.

SUBJECT

**Social Media Safety,
Sexual Harassment/Consent,
Misogyny, Cyberbullying,
AI, Pornography**

Autumn Tour 2026

22nd Sept – 24th Oct



Ignite is a dynamic new production focusing on young people's mental health amidst the overwhelming demands of modern life. The accompanying workshop for KS3&4 provides participants with a toolkit for promoting positive wellbeing.

*There is a spark burning within all of us, waiting to ignite.
Even in our darkest moments.*

Using physical theatre and visual storytelling this production draws upon real life stories. Follow the lives of three teenagers as they battle anxiety, depression and doubts about their own self-worth. Amidst the feelings of isolation, the drive to succeed and the desire to be accepted, the pressure mounts to balance life between school, friends and family. Are they the only ones feeling so alone? When life becomes so stifling, is that burning spark still there?

SUBJECT

**Anxiety, Depression,
Resilience, Self-Worth,
Connection with Others,
Exam Stress**

Spring Tour 2026

22nd Jan – 13th Feb



Meet best mates Dan and Jay, about to finish school and considering their career options. Dan is a rapper starting to gain exposure; Jay is an aspiring footballer with forthcoming trials for professional clubs. Both are desperate to leave 'The Wood', the estate where they live where gangs, crime and violence are the norm.

But everything changes when Dan is robbed by a gang and seeks revenge by joining a rival gang – and Jay reluctantly tags along. Suddenly they can earn respect and money, and 'The Wood' is transformed into their 'red carpet'. The pressure is on though – rival gangs start to threaten, tensions rise and the boys must decide whether or not to carry a knife.

SUBJECT

**Knife Crime, Gang Culture,
County Lines, Joint Enterprise**

Summer Tour 2025

8th - 18th July

Spring Tour 2026

2nd - 20th March

SALTMINE THEATRE COMPANY PRESENTS

FAULTLINES

REAL STORIES OF DOMESTIC ABUSE

Using personal stories and first-hand accounts, *Faultlines* is a play built on truth. Saltmine Theatre Company investigates the very first tremors of toxicity – control, gaslighting and love bombing - which often lead to physical violence and emotional abuse.

Weaving together the stories of people who have experienced domestic abuse we reclaim their narratives, empowering audiences to notice these signs personally and in others.

Through a performance and interactive workshop we explore what healthy relationships look like, celebrate the bravery of sharing stories and equip young people for escape and action.

This is about freedom.

SUBJECT

**Domestic Abuse,
Healthy Relationships,
Consent, Gaslighting,
Control**

Autumn 2026

Contact office for
more information

Additional Classroom Resources



Thrive Off Script is a series of short, powerful interviews from inspirational people, fulfilling curriculums and inspiring young lives to thrive. These podcasts can be used in the classroom as PSHE support with an accompanying lesson plan.

If you would like to use these interviews in the classroom, please contact creative@saltmine.org.



Testimonials

100%

of educators were satisfied with the quality of the productions and workshops

98%

of educators would recommend us to a colleague or another school

"Students recommended we have Saltmine back in to show other year groups as they felt Faultlines' message was clear and important in today's society."

–Teacher

"Switch Up had a huge impact on my son. He came home very informed."

– Parent

"Switch Up challenges the audience to consider the consequences of carrying a knife. It is very much recommended for all young people to see."

– West Midlands Police

"Filters' performance and workshop are excellent and highly impactful. Positive staff and pupil feedback."

– Dame Elizabeth Cadbury School, Assistant Head

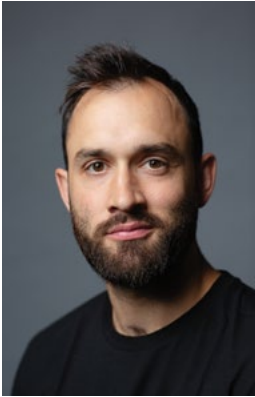
"Filters' is exactly what our children need exposure to, to learn how to keep themselves safe."

– Q3 Academy Langley, Teacher

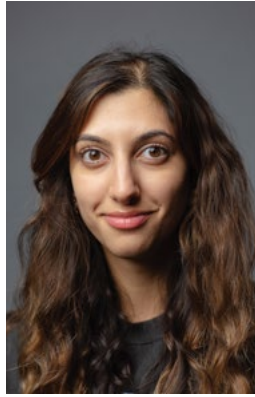
"All Faultlines' stories were powerful and hard-hitting. Domestic abuse is such an important matter within today's society that goes so unnoticed but Saltmine have taught us important things today."

– Student

Acting/Schools Team



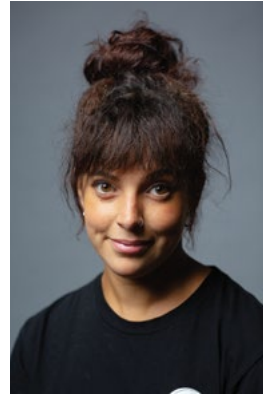
Ben



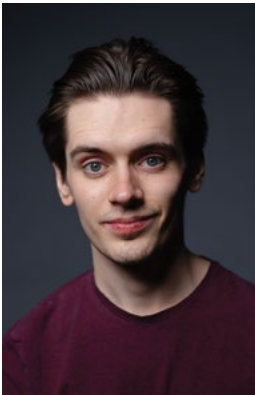
Anisha



Rowmell



Emily



Daniel



Esther



Yasmin



Theo



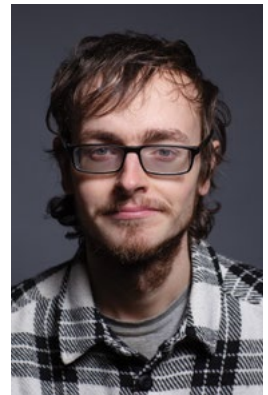
Katie



Simon



Jacob



Josh

All actors have Enhanced DBS Clearance

Mental Health First Aiders:
Ben, Anisha, Rowmell, Emily, Daniel, Simon, Jacob

Office Team



Rachael
CEO



Joanna
Creative Arts
Co-ordinator



Jonathan
Photographer



Byron
Social Media &
Content Creator



Lydia
Marketing &
Brand Manager



Diane
Finance Administrator



Sara
Operations Manager



Francesca
Fundraising &
Bid Officer

All staff have DBS Clearance

Mental Health First Aiders: Rachael and Lydia

How We Work

- 1 An enquiry through phone, email or Saltmine's online form is received.
- 2 We contact the school with more information and agree on a provisional date for the booking.
- 3 Our Creative Arts Co-ordinator will send a booking form to complete with an accompanying email detailing the length of performance, workshop, set up time and pack down time needed.
- 4 On receipt of the completed booking form (and when any queries about the space have been resolved) the booking is confirmed.
- 5 Our Creative Arts Co-ordinator will be in contact with the school near to the time of the visit to plan a schedule which fits into your school's timetable.
- 6 After the visit, we invoice the school for the total cost.
- 7 Finally, we send through our online evaluation form: please do take a moment to complete this as we always want to develop and improve our service to schools.

For some productions there are additional resources available. We will liaise with each school regarding when it would be appropriate to send these through and if a cost is involved.

Saltmine Trust promotes the productions and workshops we will be touring within a financial year via this education programme, our website, social media platforms and through promotional emails.

**If your school would like to receive information via email, please call 01384 454800 or email creative@saltmine.org with your details.*



PRICING

Production and accompanying workshop
£950 + travel + VAT per day

FUNDING

There may be funding opportunities.

Funding enquiries:
fundraiser@saltmine.org

CONTACT US

Online booking enquiries:
saltminetrust.org.uk

Booking enquiries:
creative@saltmine.org

Telephone enquiries:
01384 454 800



We look forward to working with you





Follow us @saltminetrust



01384 454 800
creative@saltmine.org
saltminetrust.org.uk

61 The Broadway, Dudley, DY1 3EB. All rights reserved Saltmine Trust © 2025
Saltmine Trust is a registered charity: No 1038007, and a limited company
registered in England and Wales: No 2930528

