



SALTMINE



Saltmine Theatre Company

SECONDARY EDUCATION PROGRAMME

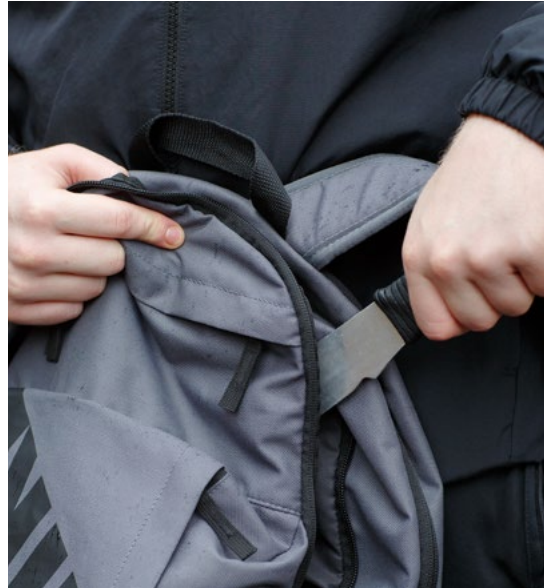
2026/27

Contents

- 4 About Us
- 6 Scheduled Productions & Accompanying Workshops
- 7 Programme
- 12 Additional Classroom Resources
- 13 Testimonials
- 14 Schools Team
- 15 Office Team
- 16 How We Work
- 17 Pricing and Contact Info



Delivering Theatre in Education



Saltmine Theatre Company's mission is to **protect children and young people** whilst preparing them for adulthood **through the power of theatre.**

We create **bespoke productions and workshops** to educate young lives on **current social issues** and empower them to make wise choices. We are passionate about partnering with schools to support the teaching of the **PSHE curriculum** and see students flourish.

Saltmine Trust is a charity and theatre company inspired by the life and teaching of Jesus. Situated in the West Midlands, we have been touring theatre and theatre in education nationally **since 1980**. We describe what we do as **Faith Motivated Arts** because our faith inspires us to care for and value every human being.



Engaging Preventative Relevant

Our engaging team facilitates discussion and provokes critical thinking, enabling young lives to make positive life choices.

Scheduled Productions & Accompanying Workshops

2026

2027



Domestic Abuse

Autumn

September - October



Knife Crime

Spring

January - February

Summer

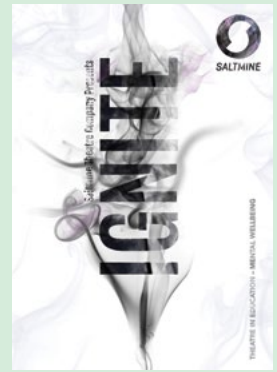
July



Social Media Safety

Spring

March - April



Mental Wellbeing

Autumn

September - October



All productions and workshops have received high acclaim from educators who have frequently given them five-star reviews



PSHE Education KS3 & KS4

These productions last approximately 50 minutes with accompanying 50-minute workshops. Timetable and venue access permitting, they can be delivered twice a day (no maximum audience numbers).

KEYSTAGE 3 & 4



Weaving together the stories of people who have experienced domestic abuse, we reclaim their narratives - empowering audiences to notice these signs personally and in others. Through the voices of female, male and child survivors, this production and accompanying workshop sensitively examines how unhealthy dynamics such as lovebombing, gaslighting and coercive control can quietly take hold, escalating into physical violence.

Students are equipped to evaluate their own relationships and empowered to ask questions such as how do toxic relationships begin, why are the signs so easy to miss, and when freedom feels impossible, is there still a way out?

Domestic Abuse

Healthy Relationships,
Consent, Gaslighting,
Control

Autumn 2026

September - October



Q3 Academy Langley



Commissioned by CHADD



Meet best mates Dan and Jay, about to finish school and considering their career options. Dan is a rapper starting to gain exposure; Jay is an aspiring footballer with forthcoming trials for professional clubs. Both are desperate to leave 'The Wood', the estate where they live where gangs, crime and violence are the norm.

But everything changes when Dan is robbed by a gang and seeks revenge by joining a rival gang – and Jay reluctantly tags along. Suddenly they can earn respect and money, and 'The Wood' is transformed into their 'red carpet'. The pressure is on though – rival gangs start to threaten, tensions rise and the boys must decide whether or not to carry a knife.

Knife Crime

Gang Culture,
County Lines,
Joint Enterprise

Spring 2027

January - February

Summer 2027

July



West Midlands Police



Derby City Council

Commissioned by Derby City Council

KEYSTAGE 3 & 4



Samantha is your typical “IT girl”. Her world revolves around TikTok dances, selfies and the latest trends. She’s got a big online following and even bigger dreams.

But riding high on ‘likes’ cannot last forever and cracks start to form in her once unbreakable friendship group. Truths get digitally twisted and an explicit image of Samantha gets exposed online in a way she cannot control. Will Samantha attempt to repair the damage to her online persona, or will she sit back helplessly and watch everything around her unravel? When filters can no longer mask the mess, Samantha and her friends are forced to face the issues in their own lives and deal with the consequences.

Social Media Safety

**Sexual Harassment/Consent,
Misogyny, Cyberbullying,
AI, Pornography**

Spring 2027

March - April



Wolverhampton Grammar School



Follow the lives of three teenagers as they battle anxiety, depression and doubts about their own self-worth. Amidst the feelings of isolation, the drive to succeed and the desire to be accepted, the pressure mounts to balance life between school, friends and family. Are they the only ones feeling so alone? When life becomes so stifling, is that burning spark still there?

Using physical theatre and visual storytelling this production draws upon real life stories, focusing on young people's mental health amidst the overwhelming demands of modern life. The accompanying workshop provides participants with a toolkit for promoting positive wellbeing. *There is a spark burning within all of us, waiting to ignite. Even in our darkest moments.*

Mental Wellbeing

Anxiety, Depression,
Resilience, Exam Stress

Autumn 2027

September - October



Black Country Mental Health

Additional Classroom Resources



Thrive Off Script is a series of short, powerful interviews from inspirational people, fulfilling curriculums and inspiring young lives to thrive. These podcasts can be used in the classroom as PSHE support with an accompanying lesson plan.

If you would like to use these interviews in the classroom, please contact creative@saltmine.org.



100%

of educators were satisfied with the quality of the productions and workshops

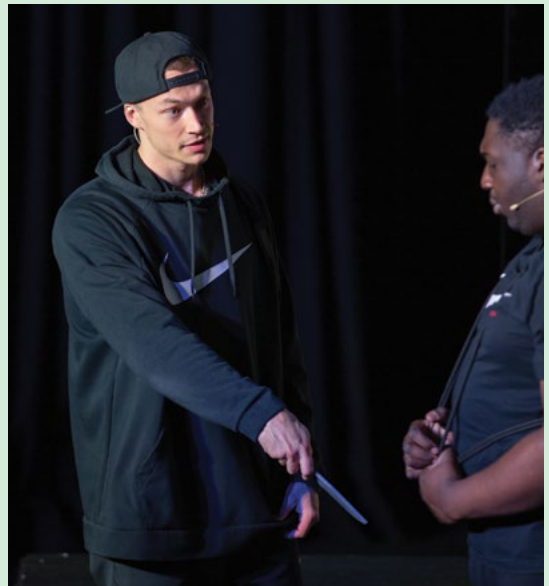
98%

of educators would recommend us to a colleague or another school

"Switch Up challenges the audience to consider the consequences of carrying a knife. It is very much recommended for all young people to see."



West Midlands Police



Acting/Schools Team



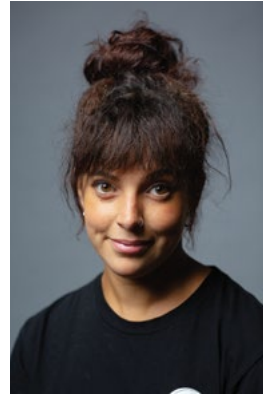
Ben



Anisha



Chris



Emily



Daniel



Esther



Yasmin



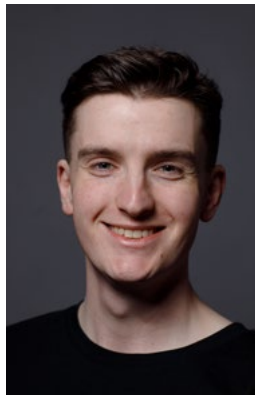
Theo



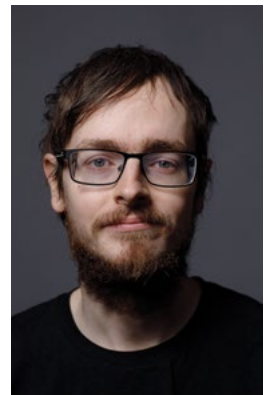
Rhianna



Simon



David



Josh

All actors have Enhanced DBS Clearance

Mental Health First Aiders:
Ben, Anisha, Emily, Daniel, Simon

Office Team



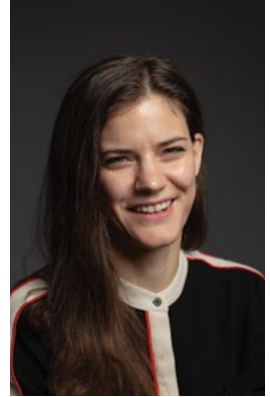
Rachael
CEO



Joanna
Creative Arts
Co-ordinator



Jonathan
Photographer



Bethany
Design Lead



Lydia
Marketing &
Brand Manager



Diane
Finance Administrator



Sara
Operations Manager



Francesca
Fundraising &
Bid Officer

All staff have DBS Clearance

Mental Health First Aiders: Rachael and Lydia

How We Work

- 1 An enquiry through phone, email or Saltmine's online form is received.
- 2 We contact the school with more information and agree on a provisional date for the booking.
- 3 Our Creative Arts Co-ordinator will send a booking form to complete with an accompanying email detailing the length of performance, workshop, set up time and pack down time needed.
- 4 On receipt of the completed booking form (and when any queries about the space have been resolved) the booking is confirmed.
- 5 Our Creative Arts Co-ordinator will be in contact with the school near to the time of the visit to plan a schedule which fits into your school's timetable.
- 6 After the visit, we invoice the school for the total cost.
- 7 Finally, we send through our online evaluation form: please do take a moment to complete this as we always want to develop and improve our service to schools.

For some productions there are additional resources available. We will liaise with each school regarding when it would be appropriate to send these through and if a cost is involved.



Download
our Primary
Education Brochure



PRICING

Production and accompanying workshop
£1075 + travel + VAT *

**These costs have been subsidised by a minimum of 30% through Saltmine's donors*

FUNDING

There may be funding opportunities.

Funding enquiries:
fundraiser@saltmine.org

CONTACT US

Online booking enquiries:
saltminetrust.org.uk

Booking enquiries:
creative@saltmine.org

Telephone enquiries:
01384 454 800



Online enquiry



**We look forward to
working with you**





Follow us @saltminetrust

01384 454 800
creative@saltmine.org
saltminetrust.org.uk

61 The Broadway, Dudley, DY1 3EB. All rights reserved Saltmine Trust © 2026
Saltmine Trust is a registered charity: No 1038007, and a limited company
registered in England and Wales: No 2930528

